

SPADE CONNECTORS

THESE RED BRASS AND ALUMINUM ALLOY SPADE CONNECTORS CAN BE MOUNTED ON ANY THREADED STUD AND LOCKED IN PLACE WITH A JAM NUT. THEY ARE USEFUL IN CONNECTION WITH THE STUD TYPE BUSHINGS IN USE ON PAD MOUNT AND UNDERGROUND TRANSFORMERS. **ALL CONNECTORS ARE ELECTRO TIN PLATED.**

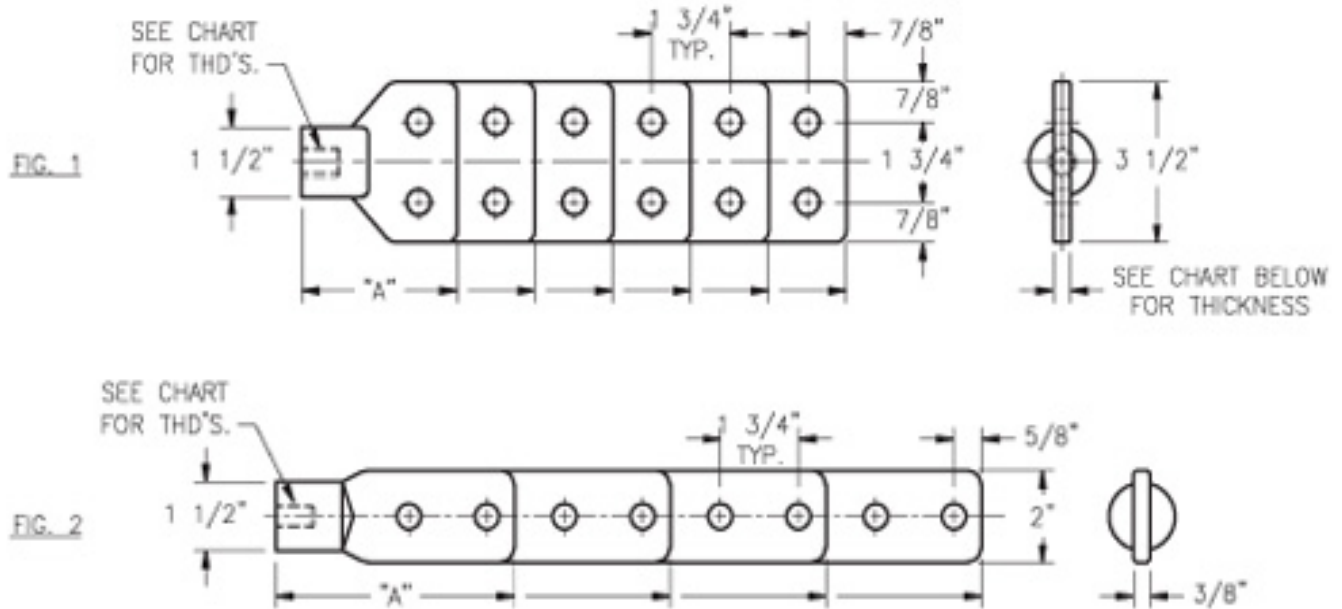


FIG. 1						FIG. 2					
ALUMINUM PART NO.	RED BRASS PART NO.	HOLES	THICK	THD'S.	"A"	ALUMINUM PART NO.	REDBRASS PART NO.	HOLES	THICK	THD'S.	"A"
34A0000408	34A000408C	2	3/8"	1/2"-13	3 1/2"	34A0000417	34A000417C	2	3/8"	1/2"-13	5 3/8"
34A0000409	34A000409C	2	3/8"	5/8"-11	3 1/2"	34A0000418	34A000418C	2	3/8"	5/8"-11	5 3/8"
34A0000410	34A000410C	2	3/8"	1"-14	3 1/2"	34A0000419	34A000419C	2	3/8"	1"-14	5 3/8"
34A0000411	34A000411C	4	3/8"	1/2"-13	5 1/4"	34A0000420	34A000420C	4	3/8"	1/2"-13	8 7/8"
34A0000412	34A000412C	4	3/8"	5/8"-11	5 1/4"	34A0000421	34A000421C	4	3/8"	5/8"-11	8 7/8"
34A0000413	34A000413C	4	3/8"	1"-14	5 1/4"	34A0000422	34A000422C	4	3/8"	1"-14	8 7/8"
34A0000414	34A000414C	6	3/8"	1/2"-13	7"	34A0000959	34A000959C	6	3/8"	1/2"-13	12 3/8"
34A0000415	34A000415C	6	3/8"	5/8"-11	7"	34A0000960	34A000960C	6	3/8"	5/8"-11	12 3/8"
34A0000416	34A000416C	6	3/8"	1"-14	7"	34A0000961	34A000961C	6	3/8"	1"-14	12 3/8"
34A0000950	34A000950C	8	3/8"	1/2"-13	8 3/4"	34A0000962	34A000962C	8	3/8"	1/2"-13	15 7/8"
34A0000951	34A000951C	8	3/8"	5/8"-11	8 3/4"	34A0000963	34A000963C	8	3/8"	5/8"-11	15 7/8"
34A0000952	34A000952C	8	3/8"	1"-14	8 3/4"	34A0000964	34A000964C	8	3/8"	1"-14	15 7/8"
34A0000953	34A000953C	10	1/2"	1/2"-13	10 1/2"						
34A0000954	34A000954C	10	1/2"	5/8"-11	10 1/2"						
34A0000955	34A000955C	10	1/2"	1"-14	10 1/2"						
34A0000956	34A000956C	12	1/2"	1/2"-13	12 1/4"						
34A0000957	34A000957C	12	1/2"	5/8"-11	12 1/4"						
34A0000958	34A000958C	12	1/2"	1"-14	12 1/4"						

